

Please call to register before initial participation

Parkinson's Support Group

Offers various topics and monthly support group.

Third Monday of each month

3:30 – 5:30 p.m.

Call 818-776-1183

Sleep Apnea (CPAP) Support Group

Learn to increase your comfort, how to reduce the need for treatment and about treatment options.

First Wednesday of February, April, June, August, October and December

6 – 7 p.m.

Call 818-885-8500, ext. 2782

Spinal Cord Injury Support Group

For spinal cord injury patients and their families.

Thursdays, 3 – 4:15 p.m.

Call 818-885-8500, ext. 3656

Stroke Support Group for Survivors & Caregivers

Wednesdays, 3 – 4 p.m.

Call 818-885-8500, ext. 4865

Trigeminal Neuralgia Support Group

In partnership with the Trigeminal Neuralgia Association.

For Trigeminal Neuralgia and related facial pain sufferers to obtain information, encouragement and treatment explanations.

Fourth Wednesday of each month

1 – 2:30 p.m.

(No meeting in November or December)

Call 818-885-8500, ext. 2565

Weight Loss Surgery Support Group

All patients and prospective patients are welcome to join. Learn about follow-up care and help us plan future events. Sessions are focused on group discussion.

Second Thursday of each month, 7 – 8 p.m.

Call toll-free 877-448-4448

WYNGS Support Group

For those living with spinal cord injuries.

**Second Wednesday of every other month
4 p.m.**

Call WYNGS at 818-267-3031

WYNGS Alas d'Esperanza

(una reunión que se lleva a cabo en español)

**El tercer miércoles de cada mes, a las
6:30 p.m.**

Llame a WYNGS at 818-267-3031



WE MAKE MOUSE CALLS

Find the right doctor
24-hours-a-day,
seven-days-a-week.
With the click of
a mouse you can

search by medical condition, specialty, city, distance or a combination of factors. If you'd rather talk to us in person, call our Free Find-A-Physician referral service at 818-908-8677.

Remember, our user-friendly website is at your fingertips. It features our free community education programs, support groups, online health library and more!

www.NorthridgeHospital.org



Northridge Hospital Medical Center

A member of CHW

18300 Roscoe Blvd. • Northridge, CA 91328

Main Number: 818-885-8500

Northridge Hospital Medical Center is a 411-bed facility serving the San Fernando Valley for more than 55 years. As a nonprofit, community-based hospital, Northridge Hospital offers a full spectrum of healthcare programs and Centers of Excellence. Northridge Hospital is affiliated with Catholic Healthcare West (CHW) and shares with them a long and rich legacy of caring and compassion.



Support Groups



Connect With Others



Northridge Hospital Medical Center

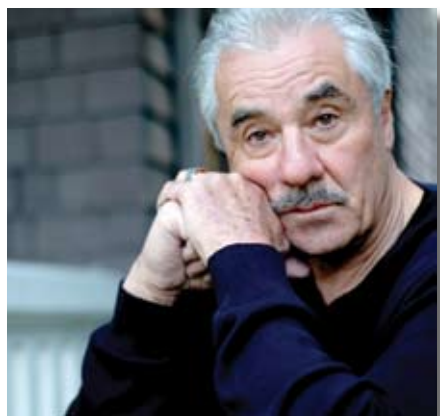
A member of CHW

Please call to register before initial participation

Through the compassionate support of others going through similar situations, these groups provide mutual aid, encouragement and education in a comfortable and safe setting.

Please call to register for each support group before initial participation. Room location and other information will be provided during the time of registration. All support groups meet at Northridge Hospital Medical Center.

Attendance is FREE. Support groups are open to the community.



Bereavement Support Group

This is an ongoing support group for those who have experienced the loss of a loved one.
Tuesdays, 6 – 7 p.m.

Call 818-885-8500, ext. 4560

Loss of a Little One

An 8-week workshop for those dealing with the loss of a pregnancy, infant or child. This program is held three times per year.

For more information, call 818-885-8500, ext. 4560

Brain Injury Support Group for Survivors & Caregivers

Meets once a week on
**Tuesdays, 7 – 8:30 p.m. or
Wednesdays, 3 – 4:30 p.m.**

Call 818-885-8500, ext. 3797

Brain Tumor Support Group

Provides encouragement and education to patients with all types of brain tumors: malignant, benign or metastatic.

**Second Wednesday of each month
12:30 – 2 p.m.**

Call 818-885-8500, ext. 5668

Breast Cancer Support Group

**Second and fourth Tuesday of each month
7 – 8:30 p.m.**

Call 818-885-8500, ext. 2855

Breastfeeding Support Group

Offered in English and Spanish. Provides support and encouragement to breastfeeding women to reduce and prevent problems that can undermine successful breastfeeding.

Thursdays, 10 – 11:30 a.m.

Call 818-885-8500, ext. 2289

Cardiac Rehab Support Group

Participants in the Cardiac Rehab Program are welcome to discuss issues, challenges and experiences.

Second Thursday of each month

Noon – 1 p.m.

Call 818-885-5489 for dates and times.

Chronic Pain Support Group

**Second and fourth Tuesday of each month
11 a.m. – 12:30 p.m.**

Call 818-885-8500, ext. 3680

Dementia Caregivers Support Group

**First and third Wednesday of each month
7 p.m.**

Call 818-317-3421

Fibromyalgia Support Group

**Second Monday of each month
6:30 – 8:30 p.m.**

Call 818-886-8730

Huntington's Disease Support Group

In partnership with the Huntington's Society of America, Los Angeles, and the Los Angeles Caregivers Resource Center.

Third Sunday of each month, 6 – 8 p.m.

Call 714-508-8103 or 714-317-3969

Liver Disease Support Group

Two Wednesdays per month

6:30 – 8 p.m.

**Call the American Liver Foundation at
310-670-4624.**

Making Today Meaningful

A general cancer support group for men and women.

First and third Tuesday of each month

2:30 – 4 p.m.

Call 818-885-8500, ext. 2855

Celebrando la Vida

Un grupo de apoyo general para hombres y mujeres que padecen de cáncer.

El primer y tercer jueves de cada mes, de las 6 a las 7:30 p.m.

Llame al 818-885-8500, extensión 2855

Mental Health Support Group

In partnership with the National Alliance on Mental Illness (NAMI) for family members of those with mental illness.

**First and third Thursday of each month
7 – 9 p.m.**

Call 818-994-6747

